



TÜRKİYE
SCHOLARSHIPS
BÜRSLARI

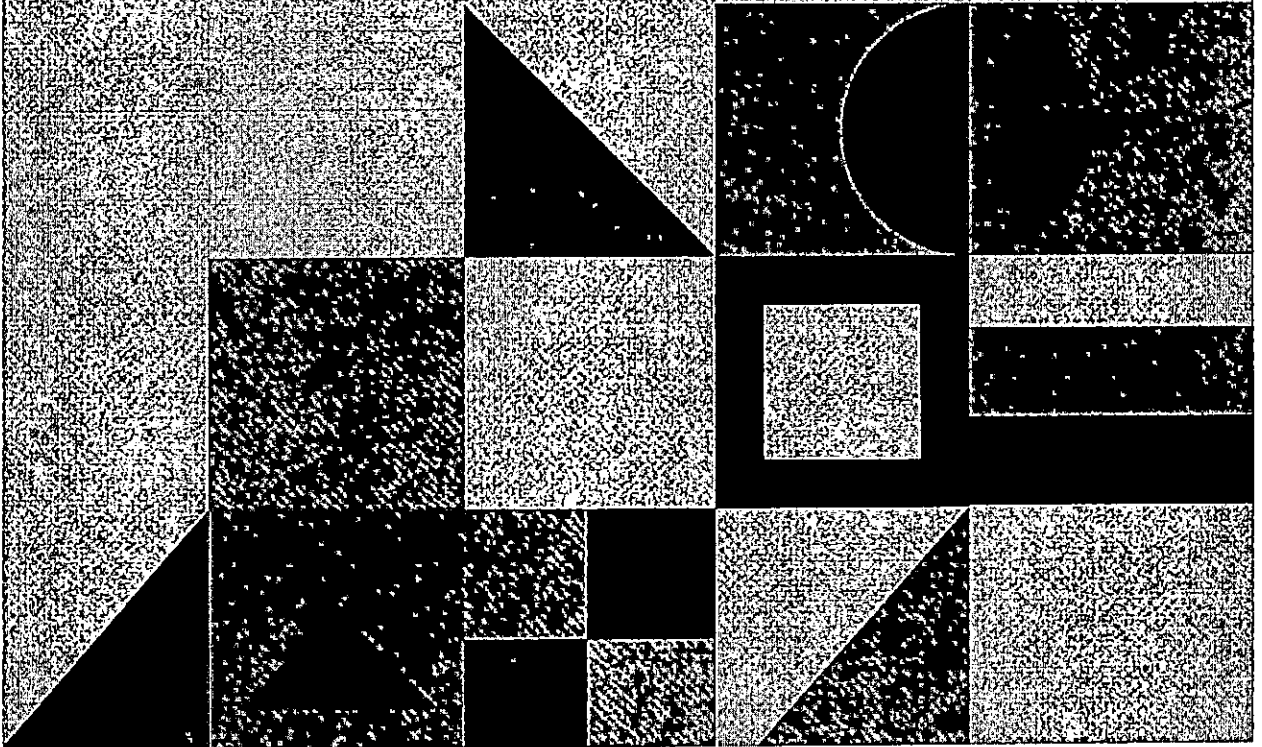


www.turkiyescholarships.gov.tr

www.turkiyeburslari.gov.tr

0850 455 0 982

    /TürkiyeBurslari

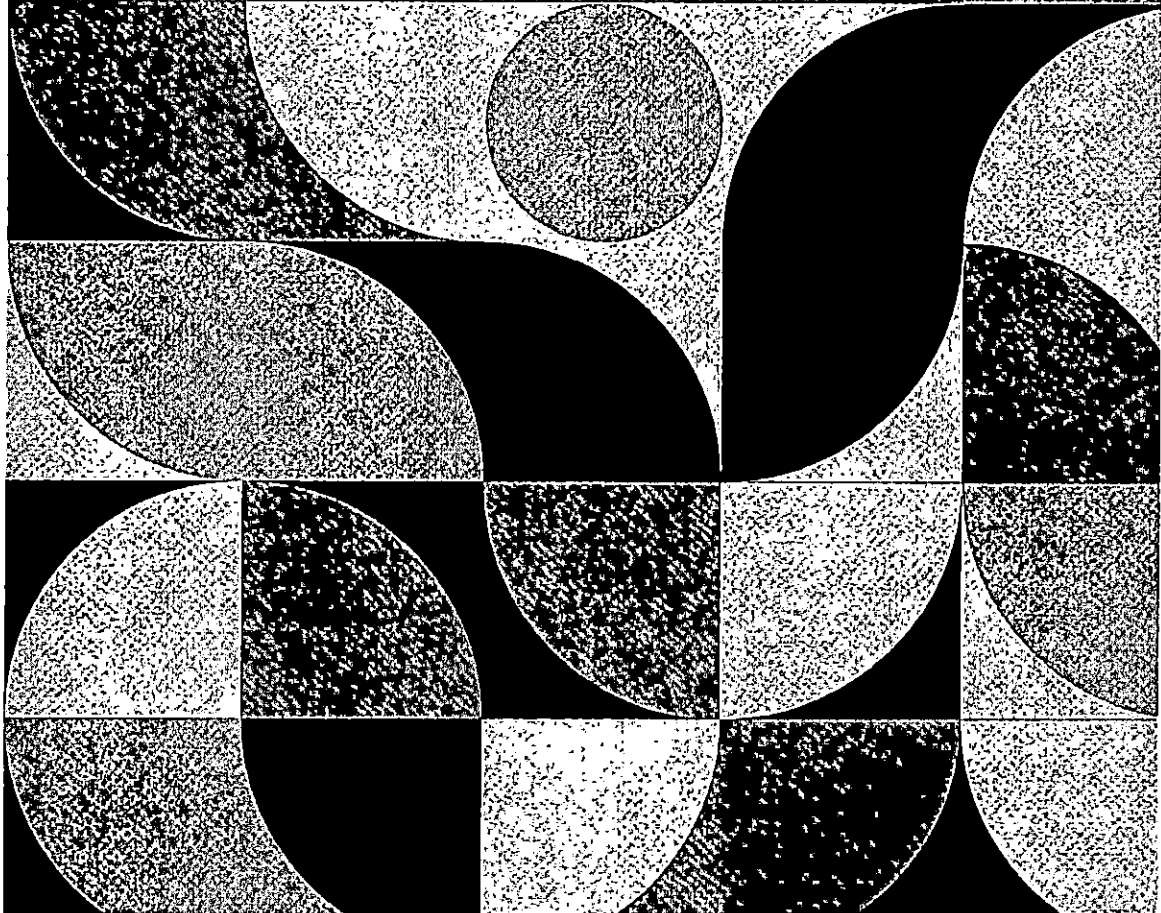


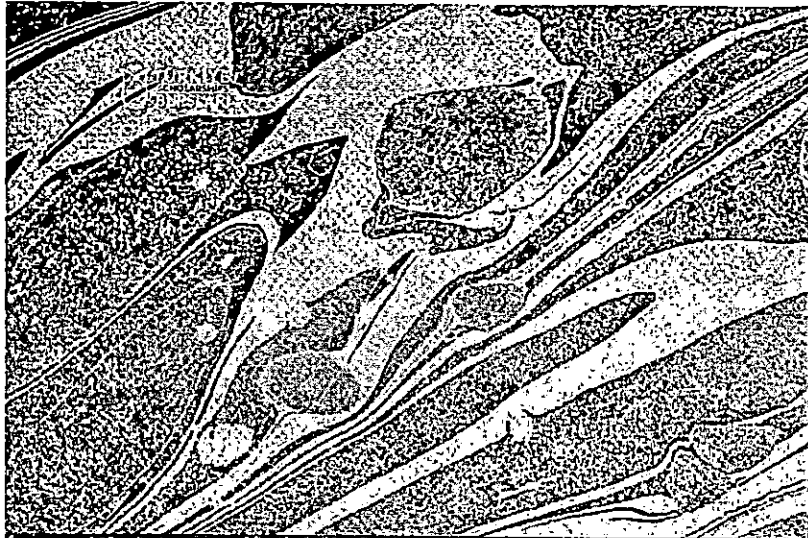


RESEARCH SCHOLARSHIP PROGRAM

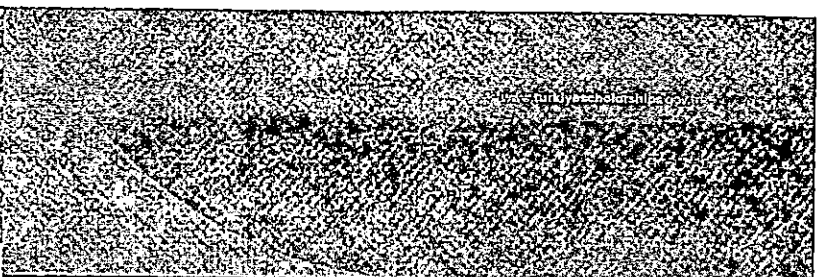
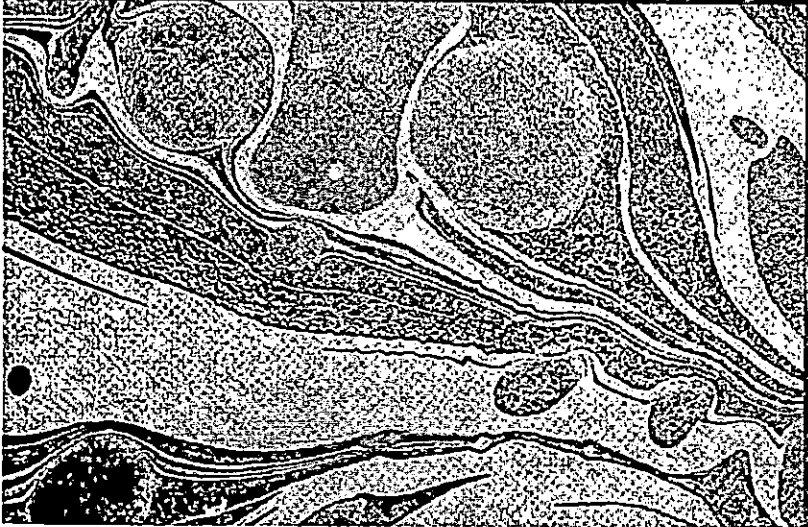
www.turkiyescholarships.gov.tr

[f](#) [t](#) [@](#) [/turkiyeburslari](#)





RESEARCH
SCHOLARSHIP
PROGRAM



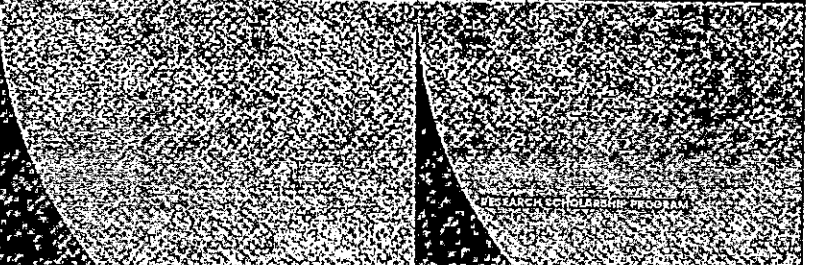
01
OVERVIEW | 6

02
APPLICATION | 8
HOW TO APPLY
REQUIRED DOCUMENTS
FEES/BIUITY

03
SELECTION | 11

04
SELECTION
PROCESS | 12
SELECTION CRITERIA

05
AWARD
DETAILS | 14



TÜRKİYE SCHOLARSHIPS IN NUMBERS

④

Currently over
16,000
scholarship holders.

Around
5,000
new scholarships
awarded each year.

Each year Türkiye
Scholarships receives
around
150,000
applications from
all over the world.

③

TÜRKİYE
MEZUNLARI
Approximately
150,000
alumni across
the world.

Türkiye Scholarships
interviews are carried
out in around
100
countries.

OVERVIEW

Türkiye Scholarships is a government-funded, competitive scholarship program, awarded to outstanding students and researchers from all over the world to pursue full-time degrees or short-term programs at the most prestigious universities in Turkey.

The scholarship program has been launched in 2012 as part of the renewed face of international student mobility in Turkish higher education.

The program aims to build a network of future leaders committed to strengthening cooperation among countries and mutual understanding among societies.

①

Highlights

Currently over
16,000
scholarship
holders from
160 countries

About
5,000
new scholars
awarded each year

Over
150,000
alumni
across
the World

RESEARCH SCHOLARSHIP PROGRAM

Research Scholarship Program is designed to encourage international researchers and academicians to carry out collaborative academic research in their own fields with Turkish academicians in the most prestigious Turkish universities.

HIGHLIGHTS

All areas of research ranging from social sciences to technical sciences are accepted in the scope of Research Scholarships.

- However, social science and humanities fields are preferred.
- The specific areas of research that are prioritized in social sciences and humanities are listed below:

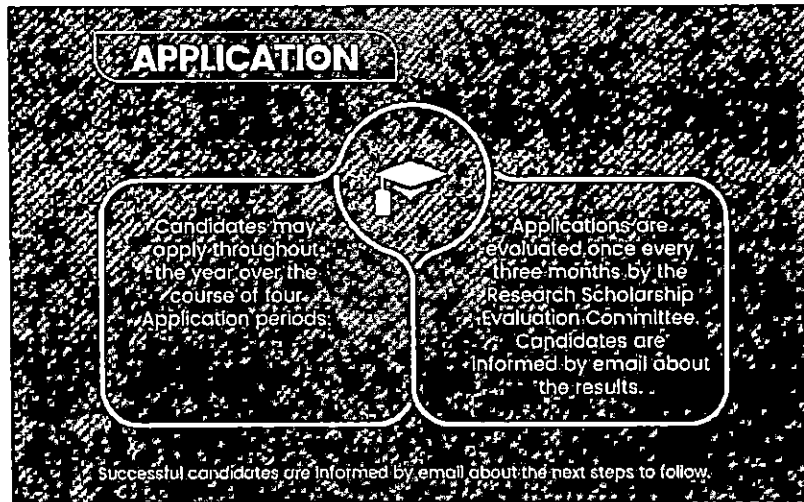
- | | |
|-----------------------------------|-----------------------------------|
| ❑ Anthropology | ❑ International Public Law |
| ❑ Archaeology | ❑ International Relations |
| ❑ Archive Research | ❑ Intervention and State-building |
| ❑ Area Studies | ❑ Islamic Finance |
| ❑ Art History | ❑ Islamophobia |
| ❑ Citizenship in Europe | ❑ Media & Culture |
| ❑ Colonial History | ❑ New Media |
| ❑ Comparative Politics | ❑ Ottoman History |
| ❑ Conflict and Security | ❑ Peace/Conflict Studies |
| ❑ Cultural Studies | ❑ Philology |
| ❑ Democratization | ❑ Philosophy |
| ❑ Democratic Institution Building | ❑ Political Sciences |
| ❑ Economics and sub-branches | ❑ Public Policy |
| ❑ Ethnicity | ❑ Public Sector Finance |
| ❑ Foreign Policy | ❑ Public Management |
| ❑ History and sub-branches | ❑ Sociology and sub-branches |
| ❑ Human Resource Management | ❑ Social Movements |
| ❑ Human Rights | ❑ World War I & II |
| ❑ Immigration & Refugees | ❑ Theology |
| ❑ International Organisations | ❑ Turkic Studies |
| ❑ International Political Theory | ❑ Turkish Education |

②

APPLICATION

Applications are received online only through Türkiye Scholarships website: www.turkiyescholarships.gov.tr
Printed applications are not accepted.

Please Note: Only one application per applicant is permitted. Multiple applications will lead to automatic disqualification of the applicant in the preliminary assessment.



HOW TO APPLY

Candidates must completely fill the online application form provided through the Türkiye Scholarships website application system. They must also upload the required scanned documents.

REQUIRED DOCUMENTS

When filling the online application form, all candidates must upload the following documents:

- ❑ Valid ID card or Passport
- ❑ Passport photo
- ❑ The Invitation Letter from a Turkish university
- ❑ Research Proposal
- ❑ A letter written and signed by the advisor at the respective Turkish university, stating the feasibility of the planned research
- ❑ Transcripts of Master's and PhD studies
- ❑ A letter of permission or approval for the candidates in any binding contract/position with any institution (may be requested after the candidate is accepted)
- ❑ At least 1 reference letter (from a person or institution other than advisor at a Turkish university)
- ❑ Ethics Committee Approval Document and/or Legal Permit (if the planned research is based on collecting any personal details from subjects or research to be conducted on non-public information and documents)
- ❑ Current student registration status showing dissertation stage for Phd students.
- ❑ A valid Diploma for PhD degree holders.

ELIGIBILITY

Candidates eligible for the Research Scholarship must meet the following criteria:

- ❑ A citizen of any country outside Turkey
- ❑ Under the age of 45
- ❑ A PhD holder or a PhD student in the dissertation phase
- ❑ Have an official invitation letter received from a Turkish university for the proposed research (Candidates holding an invitation letter from one of the universities specifically designated in the application guide provided in the system are preferred.)
- ❑ Have an Ethics Committee Approval Document and/ or Legal Permit (if the planned research is based on collecting personal details from subjects or research to be conducted on non-public information and documents)
- ❑ At least 1 reference letter (from a person or institution other than advisor at a Turkish university)

SELECTION

Research Scholarships are awarded on a competitive and merit basis. Applications are assessed on the basis of academic quality, originality and clarity of the research proposed, possible contributions of the research to academia in its respective field and other extra-curricular qualifications.

SELECTION PROCESS

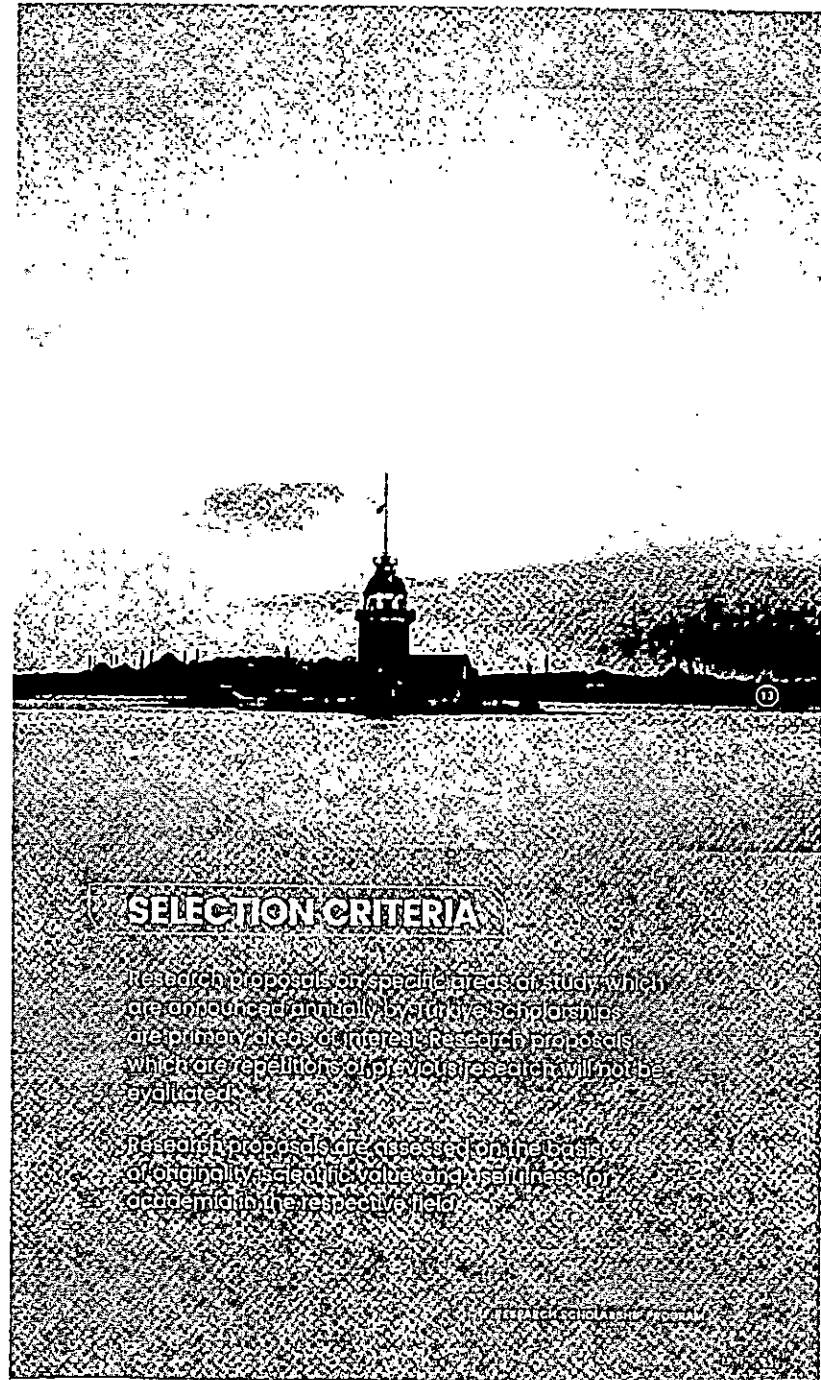
Applications undergo the selection process below:

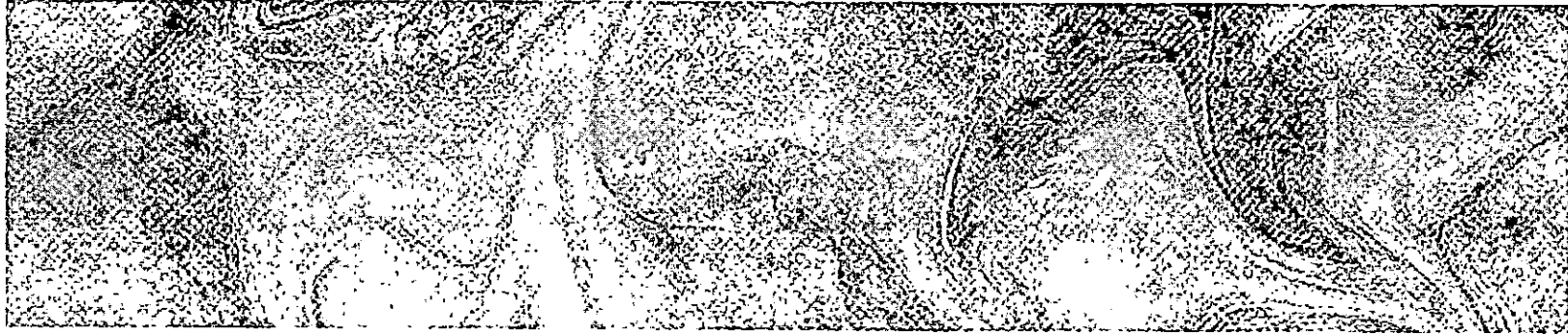
- ❑ Preliminary Assessment – All applications are reviewed based on basic criteria such as academic grades, age limit, required documents etc.
- ❑ Shortlisting – Expert committees carefully review the applications of eligible candidates based on a broad set of criteria including academic standing, previous qualifications, academic interests, originality of research proposal, career goals, clarity of letter of intent etc.
- ❑ Selection – Research Scholarship Evaluation Committee finalizes the list of applicants to be awarded a scholarship.
- ❑ Reports may be requested from acknowledged experts on the related field of research depending on specific applications.
- ❑ Eligible candidates may be interviewed by the Research Scholarship Evaluation Committee face-to-face, through internet or phone.
- ❑ Results are announced no later than 3 months from the date of application.
- ❑ Candidates and advisors receive the result by email.

12

Successful candidates receive the Türkiye Scholarships Invitation Letter and are directed to Turkish foreign representatives in the respective country to start the visa procedures.

Please Note: Successful candidates must declare their acceptance of the scholarship conditions within a month and start their research in Turkey within 3 months starting from the acceptance date.





AWARD DETAILS

14

WHAT DOES THE SCHOLARSHIP COVER

Research Scholarship Program covers a monthly stipend of 4,000 Turkish Lira.

Researchers' academic activities such as conferences, panels, symposiums, questionnaire studies etc. which are related to the ongoing research may additionally be given financial support based on the decision of the Research Scholarship Evaluation Committee.

Please Note: Research Scholarship Program does not cover transportation, accommodation and health insurance expenses.

For more information and queries:
email: research@turklyeburslari.gov.tr
Call centre: 0 850 455 0 982

LENGTH OF AWARDS

Research Scholarship Program is provided for a minimum of 3 months and a maximum of 12 months.

15

According to the quality of the researcher's work this period may be extended up to two months by the decision of the Research Scholarship Evaluation Committee.

RESPONSIBILITIES OF RESEARCHERS

Research work is followed through progress reports to be submitted periodically by the researchers.

Researchers are obliged to prepare a detailed Final Report showing the consequences and results of the research at the end of the research period.